

Emergence of Resistance to Fluoroquinolones and Third-Generation Cephalosporins in *Salmonella* Typhi in Lahore, Pakistan

Farhan Rasheed^{1*}, Muhammad Saeed², Nabil-Fareed Alikhan³, David Baker³, Mohsin Khurshid², Emma V. Ainsworth³, A. Keith Turner³, Ambereen Anwar Imran¹, Muhammad Hidayat Rasool², Muhammad Saqalein², Muhammad Atif Nisar², Muhammad Fayyaz Ur Rehman⁴, John Wain^{3,5}, Muhammad Yasir³, Gemma C. Langridge³, Aamer Ikram⁶

1 Allama Iqbal Medical College & Jinnah Hospital (AIMC&JHL) Lahore, Pakistan

2 Department of Microbiology, Government College University, Faisalabad, Pakistan

3 Microbes in the Food Chain, Quadram Institute Bioscience, Norwich Research Park, Norwich, NR4 7UQ UK

4 University of Sargodha, Sargodha, Pakistan

5 University of East Anglia, Norwich Research Park, Norwich, NR4 7TJ

6 National Institute of Health, Islamabad Pakistan

*** Corresponding author**

Key words: *Salmonella* Typhi, typhoid fever, XDR, cephalosporin resistance, Lahore, Pakistan

Abstract

Background: Extensively drug-resistant (XDR) *Salmonella* Typhi has been reported in Sindh province of Pakistan since 2016. The potential for further spread is of serious concern as remaining treatment options are severely limited. We report the phenotypic and genotypic characterisation of 27 XDR *S. Typhi* isolated from patients attending Jinnah Hospital, Lahore, Pakistan.

Methods: Isolates were identified by biochemical profiling; antimicrobial susceptibility was determined by a modified Kirby-Bauer method. These findings were confirmed using Illumina whole genome nucleotide sequence data. All sequences were compared to the outbreak strain from southern Pakistan and typed using the *S. Typhi* genotyping scheme.

Findings: Twenty-seven XDR *S. Typhi* isolates were identified from patients at Jinnah Hospital in Lahore between January and April 2019. All isolates were confirmed by sequence analysis to harbour an IncY plasmid and the CTX-M-15 ceftriaxone resistance determinant. All isolates were of the same genotypic background as the outbreak strain from Sindh province.

Summary: We report the first emergence of XDR *S. Typhi* in Punjab province of Pakistan confirmed by whole genome sequencing.

Funding: This work was supported by the BBSRC-funded QIB Institute Strategic Programme “Microbes in the Food Chain” BB/R012504/1 and its constituent projects Microbial Survival in the Food Chain (BBS/E/F/000PR10349) and Research Infrastructure (BBS/E/F/000PR10352), and the BBSRC funded Core Capability Grant (project number BB/CCG1860/1).

Research in context

Evidence before this study

Typhoid fever is endemic in Pakistan, with widespread resistance to first line drugs: ampicillin, co-trimoxazole, and chloramphenicol, and to fluoroquinolones. In 2017 the first report of additional resistance to ceftriaxone was published as XDR typhoid fever from southern Pakistan. Treatment of XDR typhoid fever has been a clinical challenge; options are scarce, and the level of chronic carriage is unknown. Current treatment is dependent upon azithromycin and this represents a major threat for the community as resistance has been reported from Bangladesh.

Added value of this study

This study is the first genomic report of XDR typhoid fever in a central part of Pakistan, describing the same genetic background as strains responsible for XDR typhoid in Sindh province. We have confirmed that the outbreak strain of XDR *S. Typhi* is now present in the most populated province and second largest city of Pakistan.

Implications of all the available evidence

The present study highlights the gravity of the situation - the spread of this strain is of serious concern. The clinical situation remains unchanged since this study was performed; we believe it is imperative that future research focuses upon the biology, transmission and control of this strain.

Background/Introduction

Typhoid fever, caused by *Salmonella Typhi*, is a global health concern. The burden of typhoid has been estimated at 13.5 million cases resulting in 135,000 deaths annually, with a global incidence of 2.14 in 1000^{1,2}. In Pakistan, the precise burden is not known but active surveillance studies in Karachi report 4.7 cases per 1000 per year. Travel-associated typhoid fever is also of concern in high income countries with more than 150 cases of typhoid fever annually in England and Wales since 2008 (PHE report 2018); most of these cases have a history of travel to south Asia. The treatment of typhoid was changed by the emergence of multi-drug resistance (MDR) in *Salmonella Typhi*, which rendered first line antibiotics (amoxicillin, co-trimoxazole, and chloramphenicol) and fluoroquinolones ineffective³. The treatment of choice became a third-generation cephalosporin, most commonly ceftriaxone⁴. In 2016, there was a report from Karachi of the emergence of extensively drug resistant (XDR) *S. Typhi*⁵. The *S. Typhi* strains described as XDR are MDR strains with additional fluoroquinolone and ceftriaxone resistance, leaving azithromycin, piperacillin-tazobactam, or carbapenem as the treatment options⁵. While a report of fluoroquinolone or ceftriaxone resistance in the Enterobacteriaceae is not uncommon in Pakistan, the isolation of *S. Typhi* harbouring resistance to these antibiotics is much more unusual. The current study was prompted by the blood culture isolation of XDR *S. Typhi* from patients under investigation at Jinnah Hospital, Lahore, raising the possibility that the Karachi outbreak strain was circulating in Lahore. Here we investigated 27 *S. Typhi* isolates obtained in less than 4 months and compared their whole genome sequences with the XDR outbreak strain.

Methods

This study was carried out at the Department of Pathology, Jinnah Hospital, Lahore, Pakistan and Quadram Institute Bioscience, Norwich, United Kingdom.

Isolation and identification of isolates

Blood cultures were collected, following normal diagnostic protocols, from patients with fever admitted to the Jinnah Hospital Lahore, Pakistan. A Gram stain was performed directly from blood culture broth; the broth was inoculated on blood agar and MacConkey agar. Bacterial colonies were identified biochemically using API 10 or API 20E (BioMérieux, France). Isolates were confirmed as *Salmonella* Typhi by serological reactions to O, H and Vi antigens (Pro-Lab Diagnostics, Canada). Antibiotic susceptibility testing was performed using a modified Kirby-Bauer method according to Clinical Laboratory Standard Institute (CLSI) 2019 guidelines. Twenty-seven XDR *S. Typhi* isolates were collected between January 2019 and April 2019 and archived at -80 °C. The isolates were re-cultured on blood agar and DNA was extracted for sequencing from single colonies.

DNA extraction

DNA extraction of *S. Typhi* isolates was carried out using a modified protocol of the PuriSpin Fire Monkey kit (RevoluGen, UK). In brief, 1 ml overnight *S. Typhi* culture was harvested and cells were resuspended in 100 µL of lysozyme (3 mg/mL), 1.2 % Triton X-100, and incubated at 37 °C, 180 rpm for 10 min. 300 µL of lysis solution and 20 µL of Proteinase K (20 mg/mL, Qiagen, UK) was added to the partly lysed cells and incubated at 56 °C for 20 min. After lysis, 10 µL of RNase A (20 µg/µL, Sigma) was added to the suspension and incubated for a further 10 min at 37 °C. Binding solution 350 µL and isopropanol (75 %) 400 µL were added to the lysed cells and the lysed cells were transferred to the spin column. Bound DNA was washed as per manufacturer's instructions and eluted in 2x100 µL of elution buffer. DNA was shipped to Quadram Institute Bioscience, Norwich, UK and concentrations were determined using the Qubit dsDNA broad range assay kit (Thermo Fisher, UK) on a Qubit 3.0 Fluorometer (Thermo Fisher).

Whole genome nucleotide sequencing

Genomic DNA concentrations were adjusted to 0.5 ng/µL with nuclease-free water for sequencing. A tagmentation mix of 3 µL was mixed with 2 µL of genomic DNA (0.5 ng/µL) and incubated at 55 °C for 10 min in a PCR block. Kapa2G PCR master mix was added 11 µL to each well sample in a 96-well plate alongside 2 µL of each of P7 and P5 of Nextera XT Index Kit v2 index primers (Illumina). The PCR was carried out

following standard Illumina guidelines. The DNA fragment libraries were quantified using the Quant-iT dsDNA high sensitivity assay kit (Thermo Fisher) and pooled. The final pool was double-SPRI size selected between 0.5 and 0.7X bead volumes using KAPA Pure Beads (Roche) and the pool was run at a final concentration of 1.8 pM on an Illumina Nextseq500 instrument using a Mid Output Flowcell (NSQ@ 500 Mid Output KT v2(300 CYS), Illumina). Data was uploaded to Basespace (www.basespace.illumina.com) where the raw data was converted to 8 FASTQ files for each sample.

Genome assembly and annotation

Genome nucleotide sequences of all strains were determined using 150 bp paired-end sequencing on the Illumina Nextseq500 platform. All raw sequence data have been deposited in the NCBI Sequence Read Archive (SRA) under BioProject accession PRJNA602421. Sequenced reads were screened using Centrifuge v1.0.4 to confirm the species of each sample as *Salmonella enterica*⁶. *De novo* assembly of individual genomes was carried out using Shovill version 1.0.0 (<https://github.com/tseemann/shovill>, accessed November 2019), which internally corrected sequencing errors, performed genome assembly using SPAdes⁷, and removed erroneous contigs. Assembly quality was assessed via QUAST v5.0.2^{8,9}. Draft genomes were annotated using Prokka v1.14¹⁰.

Genotyping and antimicrobial gene prediction

In silico Multi-Locus Sequence Typing was predicted using “MLST” v2.17.5 (<https://github.com/tseemann/mlst>, accessed November 2019) using the *Salmonella* MLST database hosted by EnteroBase¹¹. To calculate the genotype using the Genotypi scheme¹², draft genomes were aligned using Parsnp v1.2¹³ to the Typhi CT18 reference genome (Accession no. AL513382.1) and resulting variant calls (vcf) were run through Genotypi (commit version fd1d58b) (Holt, 2019), as described on the GitHub repository. Antimicrobial resistance genes were detected using ARIBA v2.14¹⁴ with default parameters.

Phylogenetic analysis

Ninety-two additional *S. Typhi* genomes were included to provide context to the 27 from this study⁵. The outgroup and reference genome (ERL12148, accession no. LT883153.1) was selected using the following criteria; the strain was closely related (i.e. *S. Typhi* haplotype H58) and the strain was not associated with the 2016 outbreak. Single nucleotide polymorphisms (SNPs) were identified against the reference using Snippy

v4.2.1 (<https://github.com/tseemann/snippy>, accessed November 2019) and visually inspected in Artemis ¹⁵.

Gubbins v2.3.1 ¹⁶ was used to define non-recombinant SNPs, which were used with RaxML ¹⁷ to construct the final phylogeny. A reference IncY plasmid (Pak60006-2016)⁵ was used with Blast Ring Image Generator (BRIG) ¹⁸ to identify nucleotide identity between the reference genome and strains genome sequenced as part of this study.

Role of the funding source

The funders had no role in study design, in the collection, analysis and interpretation of data, in the writing of the report or the decision to submit this paper for publication.

Results

Phenotypic findings

Although strict surveillance data is not available for typhoid fever in Lahore, a 12-fold increase in isolation rate was observed at Jinnah Hospital over the 12-month period July 2018 to June 2019 (number of cases = 370) relative to the previous 12 months (n<30). Twenty-seven isolates of *S. Typhi* were isolated from the blood of consecutive patients between 14th January and 1st April 2019. Fourteen isolates were from males and thirteen from females. The age range varied from 15 months to 28 years, with 11 of the isolates from under-fives, 13 from 5-16 years old and 3 from over-sixteens (Supp Table S1). This was a typical sample of patients presenting to Jinnah Hospital with suspected typhoid fever. All of the isolates were phenotypically and biochemically identified as *S. Typhi* and serologically confirmed as positive to O, Vi and H antibodies. Antibiotic susceptibility testing showed that these isolates were susceptible only to azithromycin, carbapenems and piperacillin-tazobactam (Supp Table S2). All were resistant to the standard treatment for typhoid fever including ceftriaxone. For all patients, treatment was started with intravenous meropenem followed by azithromycin. There was no mortality reported due to XDR *S. Typhi*.

Genotypic analysis

Whole genome nucleotide sequences revealed that all isolates were sequence type (ST)1 and identified as 4.3.1.1.P1 under the Genotyphi scheme, the same as the strains from the 2016 outbreak reported in Sindh province ^{5,12}. We compared our recent Lahore isolates to ~100 *S. Typhi* genomes from southern Pakistan and generated a maximum-likelihood phylogenetic tree from 68 filtered and neutral SNPs (Figure 1). All the XDR

isolates differed by 6 SNPs from the MDR *S. Typhi* clade, in accordance with findings from the 2016 outbreak⁵. Our Lahore isolates also intermingled with those from the 2016 outbreak, indicating few, if any, SNP differences between these strains. It is plausible therefore that all the XDR isolates originated from a single strain that acquired the XDR phenotype. Within the XDR clade, the Lahore isolates formed two clusters on the tree, one consisting of isolates LAH17, 5, 24 and 23, and the other of LAH2, 26, 29, 18, 11, 21, 22, 25, 15, 19, 8, 10, 6, 13, 4 and 20, suggesting patient exposure to point sources of infection.

Analysis of all 27 draft genome sequences from Lahore indicated the presence of both an IncY plasmid and the CTX-M-15 determinant associated with ceftriaxone resistance. The CTX-M-15 resistance determinant was located on an IncY plasmid in the southern Pakistan outbreak strains; our BRIG analysis suggested that this was also the case for the Lahore isolates (Figure 2).

Discussion

Here we report *S. Typhi* resistant to amoxicillin, co-trimoxazole, chloramphenicol, ciprofloxacin, and ceftriaxone from Lahore, Pakistan. Our phenotypic and genotypic analysis shows that the *S. Typhi* XDR isolates were indistinguishable from the outbreak strain described in southern Pakistan, indicating that the cases in Lahore are part of the same outbreak. We have investigated a single tertiary health care facility in Lahore but alongside other reports, we believe it is spreading locally¹⁹. The isolates from Jinnah Hospital are closely related but several of them harbour SNP differences. Since *S. Typhi* is a clonal pathogen the presence of these SNPs suggest that either the XDR strain is not a recent introduction to the area or that it has been imported several times²⁰.

The increased level of *S. Typhi* isolation from blood culture and the presence of XDR *S. Typhi* is of serious public health concern. Treatment of XDR *S. Typhi* is one of the growing challenges for infectious disease physicians in Lahore and more widely in Pakistan. The only treatment options that remain in this situation are azithromycin, meropenem, and piperacillin/tazobactam. The treatment strategy for XDR typhoid is intravenous meropenem for seven days followed up by oral azithromycin; this is being used in Pakistan as well as in internationally exported cases²¹ (Asst. Prof. Fahad Aman Khan, personal communication). Carbapenems are a potent class of antibiotics and an effective treatment for typhoid fever but the presence of carbapenemase-producing Enterobacteriaceae is a critical threat^{21,22}. In addition, the cost of carbapenems in Lahore is prohibitive (one course costs ~50,000 PKR, equivalent to ~ 320 USD, January 2020). In practical terms, this

leaves many patients with azithromycin as their only viable option (Asst. Prof. Fahad Aman Khan, personal communication).

Furthermore, of the remaining treatment options for XDR *S. Typhi*, only azithromycin is administered orally but the danger is that its use is also prone to the emergence of resistance²³. Resistance has already been reported in typhoidal *Salmonella* from Bangladesh, where resistance was conferred by single nucleotide changes in the *acrB* efflux system²⁴ and Pakistan²⁵, and the macrolide resistance genes *mphA*, *mphB* and *mefB*²⁶ have been reported as conferring resistance in non-typhoidal *Salmonella*. It is likely only a matter of time before one of these mechanisms emerges in the XDR background, rendering carbapenems the only, more expensive, treatment option. It is also worth noting that while azithromycin remains a viable treatment in susceptible XDR isolates, it has been contraindicated for patients on arrhythmic, antipsychotics and citalopram medications leading to an increased risk of cardiovascular-related mortality²⁷.

In conclusion, the risk of single point mutations conferring resistance to azithromycin and of the horizontal transmission of carbapenemase-mediated resistance makes the ongoing threat of XDR typhoid fever very real in Lahore. Epidemiological studies and functional genomics are urgently needed to inform local, national and international control measures and future public health strategies.

Acknowledgements

The authors gratefully acknowledge the ward and laboratory staff at Jinnah Hospital, Lahore and the support of the Biotechnology and Biological Sciences Research Council (BBSRC). EVA, DB, AKT, JW, MY and GCL were supported by the BBSRC Institute Strategic Programme Microbes in the Food Chain BB/R012504/1 and its constituent projects Microbial Survival in the Food Chain (BBS/E/F/000PR10349) and Research Infrastructure (BBS/E/F/000PR10352). NFA was supported by the BBSRC funded Core Capability Grant (project number BB/CCG1860/1). DNA extraction kits were provided free of charge by RevoluGen.

Authors' contributions

FR, MFUR, MY, GCL, AAI, MHR, MSA, MSaq, MAN, MK and AI conceived the study. EVA and DB performed the genome sequencing. NFA, MY, AKT, JW and GCL analysed the data. FR, MFUR, MY, JW and

GCL drafted the manuscript. MSae, MAN, MSaq and MK performed the DNA extractions. All authors read and approved the final draft.

Ethics statement

Ethical approval for this study was obtained from the ethical review board of Allama Iqbal Medical College/Jinnah Hospital, Lahore. All patient data was anonymised to remove any identifying information.

Declaration of interests

GCL has received fees from RevoluGen for consultancy work.

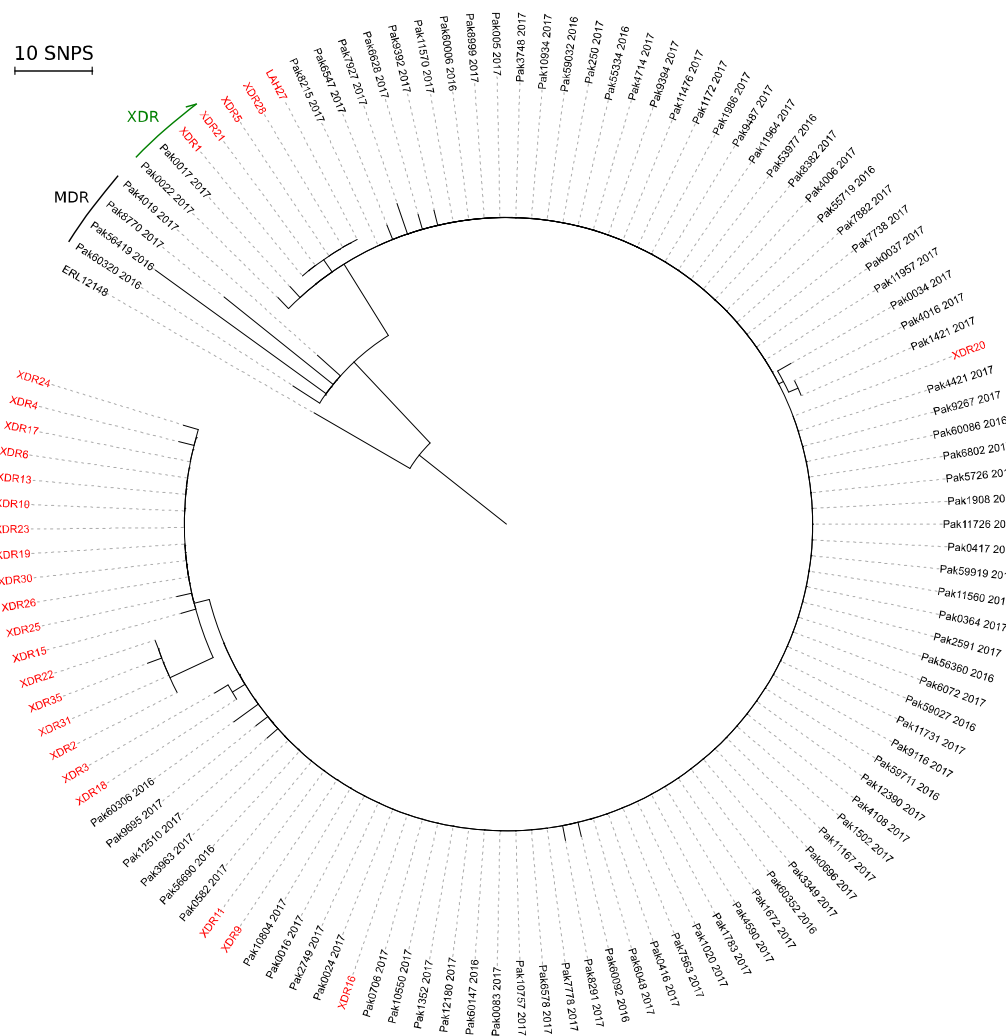


Figure 1. Phylogenetic tree of XDR *S. Typhi*

Radial phylogram of maximum-likelihood phylogeny (RaxML) rooted to *S. Typhi* ERL12148 (accession LT883153.1). PAK strain numbers in black are from Klemm et al (2019) and LAH strain numbers (red) are from Lahore (this study). Black bar labelled MDR, indicates MDR strains and green arrow indicates that all strains from PAK0002 clockwise to LAH20 are XDR.

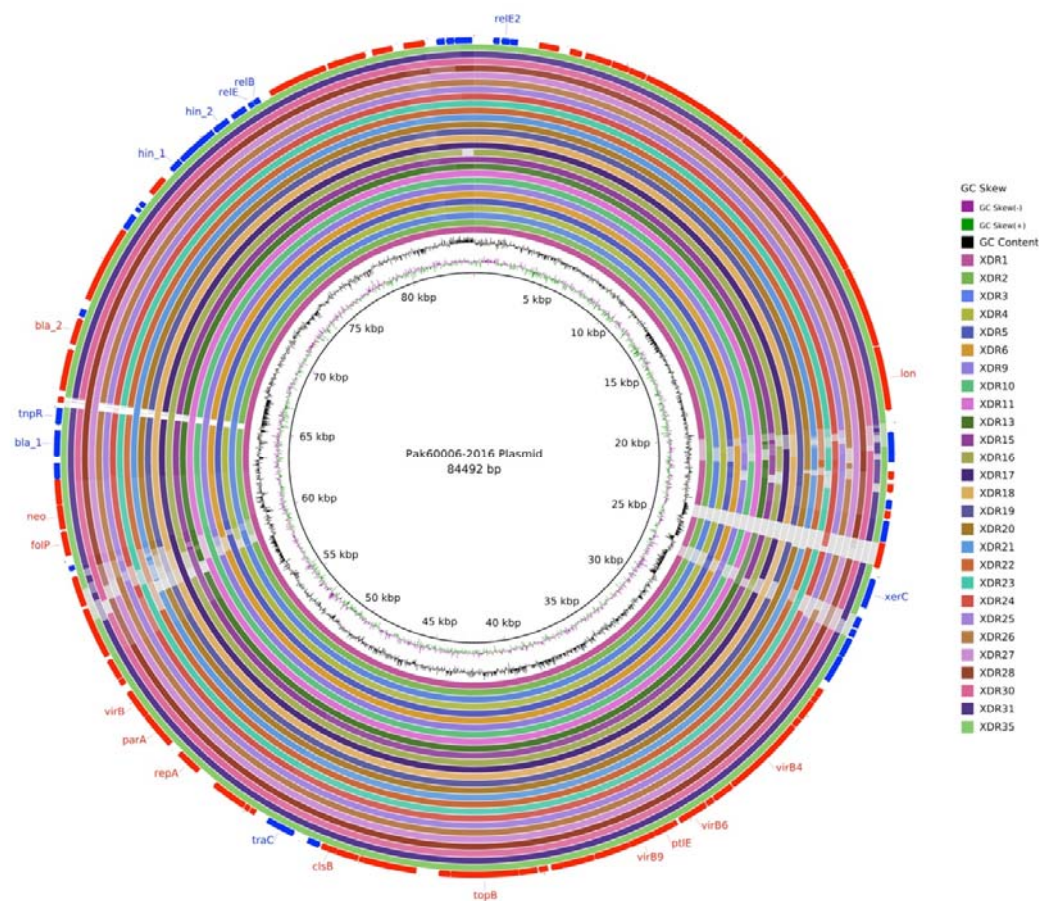


Figure 2. CTX-M-15 located on IncY plasmid

The inner circle represents the reference plasmid sequence p60006. Concentric rings indicate BLAST identity between reference and strains sequenced as part of this study. BLASTn matches between 90 % and 100 % nucleotide identity are coloured from lightest to darkest shade, respectively. Matches with less than 80 % identity, or plasmid regions with no BLAST matches, appear as blank spaces in each ring. Inner most rings plot GC Skew and GC content. Outermost ring shows locations of coding sequences (red - sense; blue - antisense) and gene names are labelled where known. The CTX-M-15 gene is labelled in black.

Supplementary Material

Table S1. Anonymised patient data

Table S2. Antimicrobial susceptibility testing results

References

1. Buckle GC, Walker CL, Black RE. Typhoid fever and paratyphoid fever: Systematic review to estimate global morbidity and mortality for 2010. *J Glob Health* 2012; **2**(1): 010401.
2. Mogasale V, Maskery B, Ochiai RL, et al. Burden of typhoid fever in low-income and middle-income countries: a systematic, literature-based update with risk-factor adjustment. *Lancet Glob Health* 2014; **2**(10): e570-80.
3. Wain J, Kidgell C. The emergence of multidrug resistance to antimicrobial agents for the treatment of typhoid fever. *T Roy Soc Trop Med H* 2004; **98**(7): 423-30.
4. Bhutta ZA. Current concepts in the diagnosis and treatment of typhoid fever. *Br Med J* 2006; **333**(7558): 78-82b.
5. Klemm EJ, Shakoor S, Page AJ, et al. Emergence of an Extensively Drug-Resistant Salmonella enterica Serovar Typhi Clone Harboring a Promiscuous Plasmid Encoding Resistance to Fluoroquinolones and Third-Generation Cephalosporins. *MBio* 2018; **9**(1).
6. Kim D, Song L, Breitwieser FP, Salzberg SL. Centrifuge: rapid and sensitive classification of metagenomic sequences. *Genome Res* 2016; **26**(12): 1721-9.
7. Bankevich A, Nurk S, Antipov D, et al. SPAdes: a new genome assembly algorithm and its applications to single-cell sequencing. *J Comput Biol* 2012; **19**(5): 455-77.
8. Powers CM, Grieger KD, Hendren CO, et al. A web-based tool to engage stakeholders in informing research planning for future decisions on emerging materials. *Sci Total Environ* 2014; **470-471**: 660-8.
9. Gurevich A, Saveliev V, Vyahhi N, Tesler G. QUAST: quality assessment tool for genome assemblies. *Bioinformatics* 2013; **29**(8): 1072-5.
10. Seemann T. Prokka: rapid prokaryotic genome annotation. *Bioinformatics* 2014; **30**(14): 2068-9.
11. Zhou Z AN, Mohamed K, Group TAS, Achtman M. The user's guide to comparative genomics with Enterobase. Three case studies: micro-clades within Salmonella enterica serovar Agama, ancient and modern populations of Yersinia pestis, and core genomic diversity of all Escherichia. *BioRxiv* 2019.
12. Wong VK, Baker S, Connor TR, et al. An extended genotyping framework for Salmonella enterica serovar Typhi, the cause of human typhoid. *Nat Commun* 2016; **7**: 12827.
13. Treangen TJ, Ondov BD, Koren S, Phillippy AM. The Harvest suite for rapid core-genome alignment and visualization of thousands of intraspecific microbial genomes. *Genome Biol* 2014; **15**(11): 524.
14. Hunt M, Mather AE, Sanchez-Buso L, et al. ARIBA: rapid antimicrobial resistance genotyping directly from sequencing reads. *Microb Genom* 2017; **3**(10): e000131.
15. Carver T, Harris SR, Berriman M, Parkhill J, McQuillan JA. Artemis: an integrated platform for visualization and analysis of high-throughput sequence-based experimental data. *Bioinformatics* 2012; **28**(4): 464-9.

16. Croucher NJ, Page AJ, Connor TR, et al. Rapid phylogenetic analysis of large samples of recombinant bacterial whole genome sequences using Gubbins. *Nucleic Acids Res* 2015; **43**(3): e15.
17. Stamatakis A. RAxML version 8: a tool for phylogenetic analysis and post-analysis of large phylogenies. *Bioinformatics* 2014; **30**(9): 1312-3.
18. Alikhan N-F, Petty NK, Zakour NLB, Beatson SA. BLAST Ring Image Generator (BRIG): simple prokaryote genome comparisons. *BMC Genomics* 2011; **12**(1): 402.
19. Hameed S IM, Basheer A, Lal C, Rishi S, Basit A. An Update on Isolation of Extensively Drug Resistant (XDR) Salmonella enterica from Blood Cultures in a Tertiary Care Centre. *Proceedings SZPGMI* 2019; **33**: 5.
20. Kidgell C, Reichard U, Wain J, et al. Salmonella typhi, the causative agent of typhoid fever, is approximately 50,000 years old. *Infect Genet Evol* 2002; **2**(1): 39-45.
21. Engsbro AL, Riis Jespersen HS, Goldschmidt MI, et al. Ceftriaxone-resistant Salmonella enterica serotype Typhi in a pregnant traveller returning from Karachi, Pakistan to Denmark, 2019. *Euro Surveill* 2019; **24**(21).
22. Hannan A, Yasir M., Tahir NA., Izhar M, Arshad M, Arshad MU. Carbapenemase intrudes K. pneumoniae in local clinical isolates. *Pak J Path* 2011; **22**(1): 5.
23. Malhotra-Kumar S, Lammens C, Coenen S, Van Herck K, Goossens H. Effect of azithromycin and clarithromycin therapy on pharyngeal carriage of macrolide-resistant streptococci in healthy volunteers: a randomised, double-blind, placebo-controlled study. *Lancet* 2007; **369**(9560): 482-90.
24. Hooda Y, Sajib MS, Rahman H, et al. Molecular mechanism of azithromycin resistance among typhoidal Salmonella strains in Bangladesh identified through passive pediatric surveillance. *PLoS Neglect Trop D* 2019; **13**(11).
25. Hussain A, Satti L, Hanif F, et al. Typhoidal Salmonella strains in Pakistan: an impending threat of extensively drug-resistant Salmonella Typhi. *Eur J Clin Microbiol Infect Dis* 2019; **38**(11): 2145-9.
26. Nair S, Ashton P, Doumith M, et al. WGS for surveillance of antimicrobial resistance: a pilot study to detect the prevalence and mechanism of resistance to azithromycin in a UK population of non-typhoidal Salmonella. *J Antimicrob Chemother* 2016; **71**(12): 3400-8.
27. Mosholder AD, Mathew J, Alexander JJ, Smith H, Nambiar S. Cardiovascular risks with azithromycin and other antibacterial drugs. *N Engl J Med* 2013; **368**(18): 1665-8.